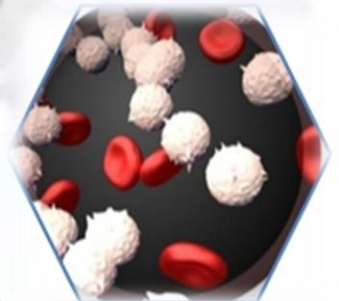
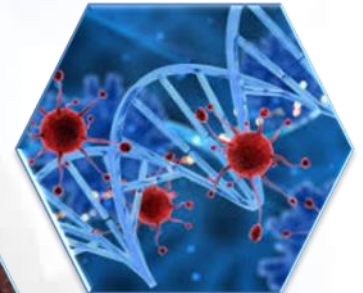
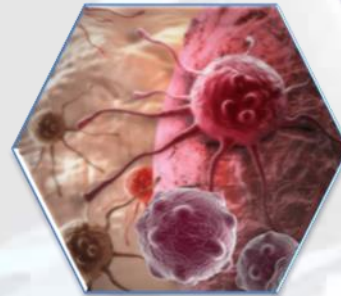


2017

Annual Report

Sakonnakorn Hospital-Based Cancer Registry



INTRODUCTION

Sakonnakorn Hospital-Based Cancer Registry 2017. The purpose of this report is to provide base is information in the field of research.

I hope that the data from this Cancer Registry will benefit health personals, physicians, medical students, researchers, patients, relatives and eventually general population.

Dr. Kiattisak Promsensa
Sakonnakorn Hospital Comprehensive
Cancer Center

List of Table

Table	Page
Table 1 Number of all new patient: 2018	1
Table 2 The Most Common Cancer: males	1
Table 3 The Most Common Cancer: females	2
Table 4 Type of Diagnosis of cancer site of all cancer	3
Table 5 Type of Extension of cancer site of all cancer	4
Table 6 Type of Stage of cancer site of all cancer	5
Table 7 Type of Treatment of cancer Site of all Cancer	6
Table 8 Method of Type of Treatment	7-8
Table 9 Number of Cancer by Age-group in male	9-10
Table 10 Number of Cancer by Age-group in male	10-12
Table 11 Pathology According to site	12-24
Table 12 Type of Diagnosis of cancer site Liver cancer & cholangiocarcinoma	26
Table 13 Type of Extension of cancer site of Liver cancer & cholangiocarcinoma	26
Table 14 Type of Stage of cancer site of Liver cancer & cholangiocarcinoma	27
Table 15 Method of Type of Treatment	28-30
Table 16 Type of Diagnosis of cancer site of lung cancer	31
Table 17 Type of Extension of cancer site of lung cancer	31
Table 18 Type of Stage of cancer site of lung cancer	32
Table 19 Method of treatment of lung cancer	32-33
Table 20 Type of Diagnosis of cancer site of Breast cancer	33
Table 21 Type of Extension of cancer site of Breast cancer	33
Table 22 Type of Stage of cancer site of Breast cancer	34
Table 23 Method of treatment of Breast cancer	35
Table 24 Type of Diagnosis of cancer site of Colorectal cancer	36
Table 25 Type of Extension of cancer site of Colorectal cancer	36
Table 26 Type of Stage of cancer site of Colorectal cancer	37
Table 27 Method of treatment of Colorectal cancer	37-38
Table 28 Type of Diagnosis of cancer site of Lymphoma	38
Table 29 Type of Extension of cancer site of Lymphoma	38
Table 30 Type of Stage of cancer site of Lymphoma	39
Table 31 Method of treatment of Lymphoma	39-41

List of Figures

Figures	Page
Figures 1 The most common cancer: males	1
Figures 2 The most common cancer: females	2
Figures 3 Type of Diagnosis of cancer site of all cancer	3
Figures 4 Type of Extension of cancer site of all cancer	4
Figures 5 Number by Age-group and sex of all Cancer	5
Figures 6 Type of Stage of cancer site of all cancer	6
Figures 7 Type of Treatment of cancer Site of all Cancer	6
Figures 8 Number by Age-group and sex of Liver cancer & cholangiocarcinoma	27
Figures 9 Number by Age-group and sex of Lung cancer	31
Figures 10 Number by Age-group and sex of Breast cancer	34
Figures 11 Number by Age-group and sex of Colorectal cancer	36
Figures 12 Number by Age-group and sex of Lymphoma	39

SAKONNAKORN HOSPITAL CANCER REGISTRY COMMITTEE, 2017

CHAIRMAN:

Dr. Kiattisak Promsensa

Department of Radiation oncology

CANCER REGISTRY TEAM:

Mrs. Thatsanee Kleebrung

Case manager of CA Lung

Miss Pornnipa Tinarak

Case manager of CA Lung

Mrs. Praweena Thummachot

Case manager of CA Lung

Mrs. Saengduean Mekarach

Case manager of CA Colon

Mrs. Wilailuk Thaiwong

Case manager of CA Head & Neck

Mrs. Wannapa wantong

Case manager of Brain tumor

Mrs. Sutthiporn Worrabannakorn

Case manager of CCA

Mrs. Prakong Nakain

Case manager of Hematology

Miss Chutima Namnon

Case manager of RT

Miss Tippawan Matarach

Case manager of CA Prostate

Miss Anunya Ondee

Case manager of CA Cervix

Miss Kopkul Pholyiam

Case manager of CA stomach

Miss Siriporn Siridon

Case manager of CA Breast

Mrs. Patchara Kongkaew

Cancer Nurse Coordinator

Miss Lakkhana Promkasikorn

Cancer Nurse Coordinator

Title Sakonnakorn Hospital-Based Cancer Registry 2017

Editorial Board Dr. Kiattisak Promsensa
Chairman

Published by Sakonnakorn Hospital Comprehensive Cancer Center,
Sakonnakorn Hospital. 1041, Thartcheangchum, Meang, Sakonnakorn,
Thailand 47000 Tel. 042-17600 ต่อ 3962

Published 2017

Edition 1st edition

Physical 42 Pages

ISBN -

Sakonnakorn Hospital-Based Cancer Registry 2017

Number of new cancer patient: 2017

Table 1 Number of all new patient: 2017

Sex	NO.	%
male	436	44.3
female	548	55.7
Total	984	100

Table 2 The Most Common Cancer: males

Ordinal	ICD-10	Site	No	%
1	C22,C24	Liver and bile duct	113	25.9
2	C33-C34	Trachea, brochus and lung	69	15.8
3	C18-C21	Colon and rectum	55	12.6
4	C82-C85,C96	Non-Hodgkin lymphoma	45	10.3
5	C91-C95	Leukemia	31	7.1
6	D45-D47	Myelodysplastic	27	6.2
7	C16	Stomach	18	4.1
8	O&U	Other and unspecified	17	3.9
9	C70-C72	Brain, nervous system	9	2.1
10	C11	Nasopharynx	6	1.4

Figures 1 The Most Common Cancer: males

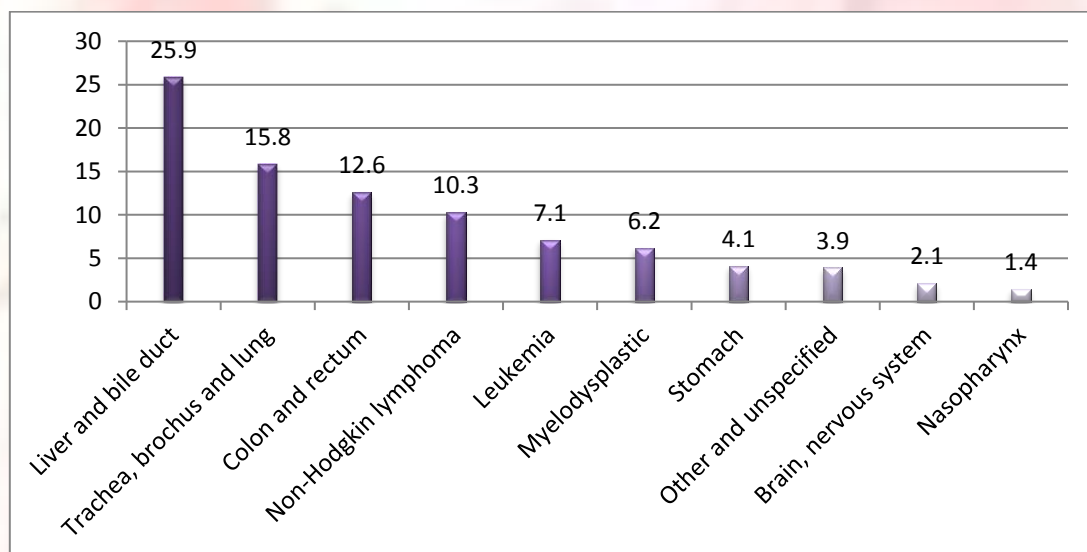
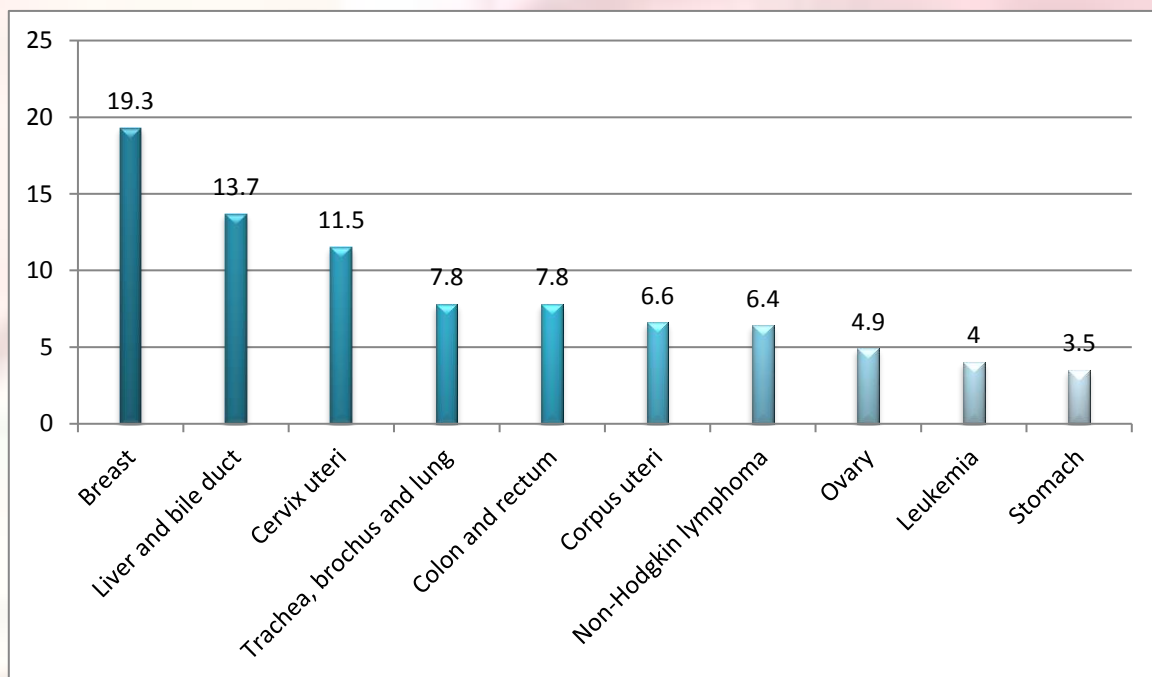




Table 3 The Most Common Cancer: females

Ordinal	ICD-10	Site	No	%
1	C50	Breast	106	19.3
2	C22,C24	Liver and bile duct	75	13.7
3	C53	Cervix uteri	63	11.5
4	C33-C34	Trachea, brochus and lung	43	7.8
5	C18-C21	Colon and rectum	43	7.8
6	C54	Corpus uteri	36	6.6
7	C82-C85,C96	Non-Hodgkin lymphoma	35	6.4
8	C56	Ovary	27	4.9
9	C91-C95	Leukemia	22	4.0
10	C16	Stomach	19	3.5

Figures 2 The most common cancer: females



Tabel 4 Type Of Diagnosis of cancer site of all cancer.

Diagnosis	Definition	male		female		Total	
		NO	%	NO	%	NO	%
1	History & Physical exam	14	3.2	33	6.0	47	4.78
2	Endoscopy&Radiohogy	163	37.4	103	18.8	266	27.03
3	ผ่าตัดหรือผ่าศพ โดยไม่มีผลชิ้นเนื้อ	1	0.2	0	0.0	1	0.10
4	Specific Biochem/Immuno.test	0	0.0	9	1.6	9	0.91
5	Cytology & hematology	7	1.6	8	1.5	15	1.52
6	History of matastasis	2	0.5	13	2.4	15	1.52
7	Histology of Primary	249	57.1	380	69.3	629	63.92
8	ผ่าศพและมีผลชิ้นเนื้อ	0	0.0	2	0.4	2	0.20

Figures 3 Type of Diagnosis of cancer site of all cancer.

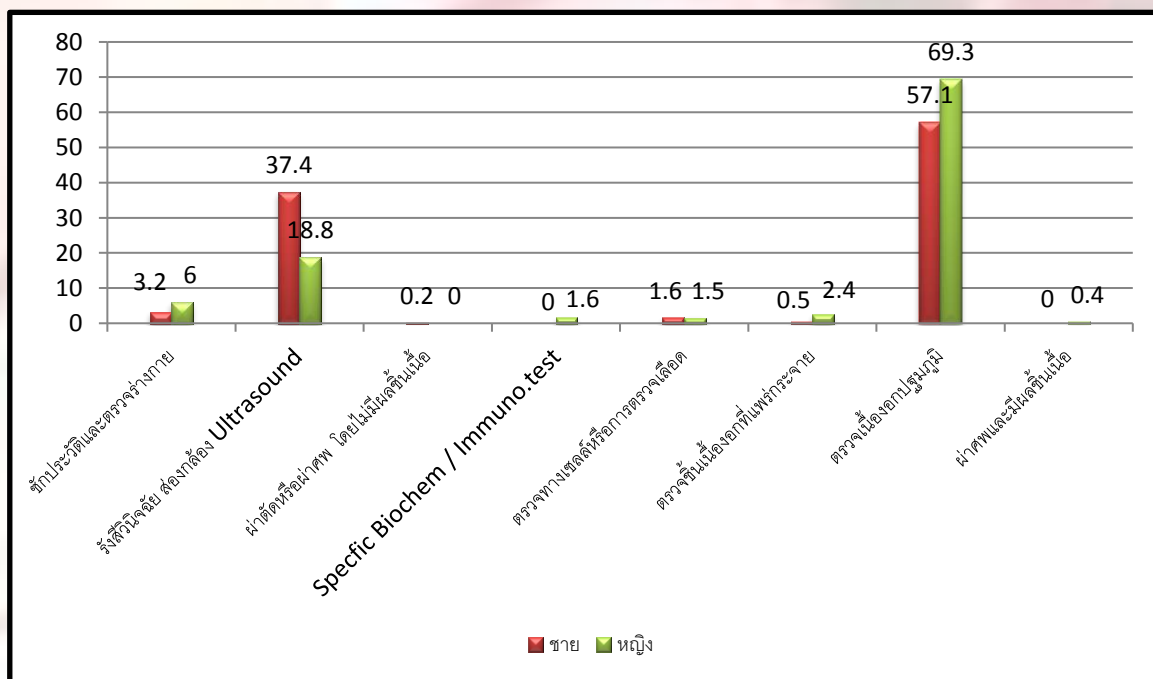
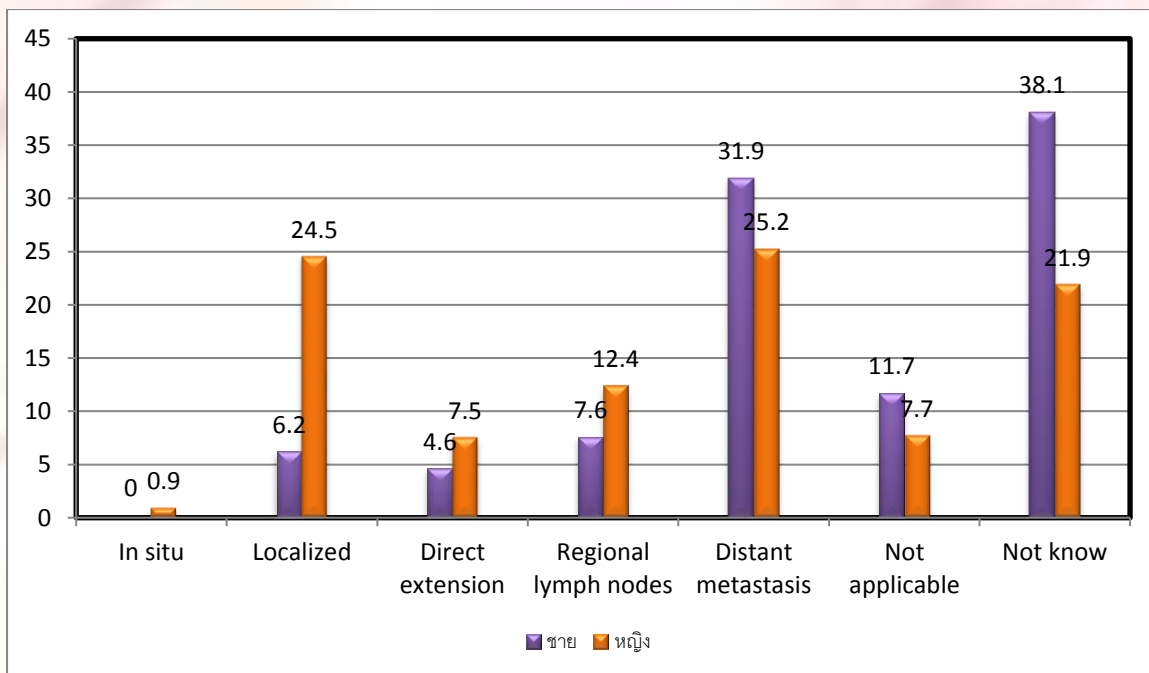


Table 5 Type of Extension of cancer site of all cancer.

Extension	Definition	male		female		Total	
		NO	%	NO	%	NO	%
1	In situ	0	0.0	5	0.9	5	0.51
2	Localized	27	6.2	134	24.5	161	16.36
3	Direct extension	20	4.6	41	7.5	61	6.20
4	Regional lymph nodes	33	7.6	68	12.4	101	10.26
5	Distant metastasis	139	31.9	138	25.2	277	28.15
8	Not applicable	51	11.7	42	7.7	93	9.45
9	Not know	166	38.1	120	21.9	286	29.07

Figures 4 Type Of Extension of cancer site of all cancer.



Figures 5 Number by Age-group and sex of all Cancer.

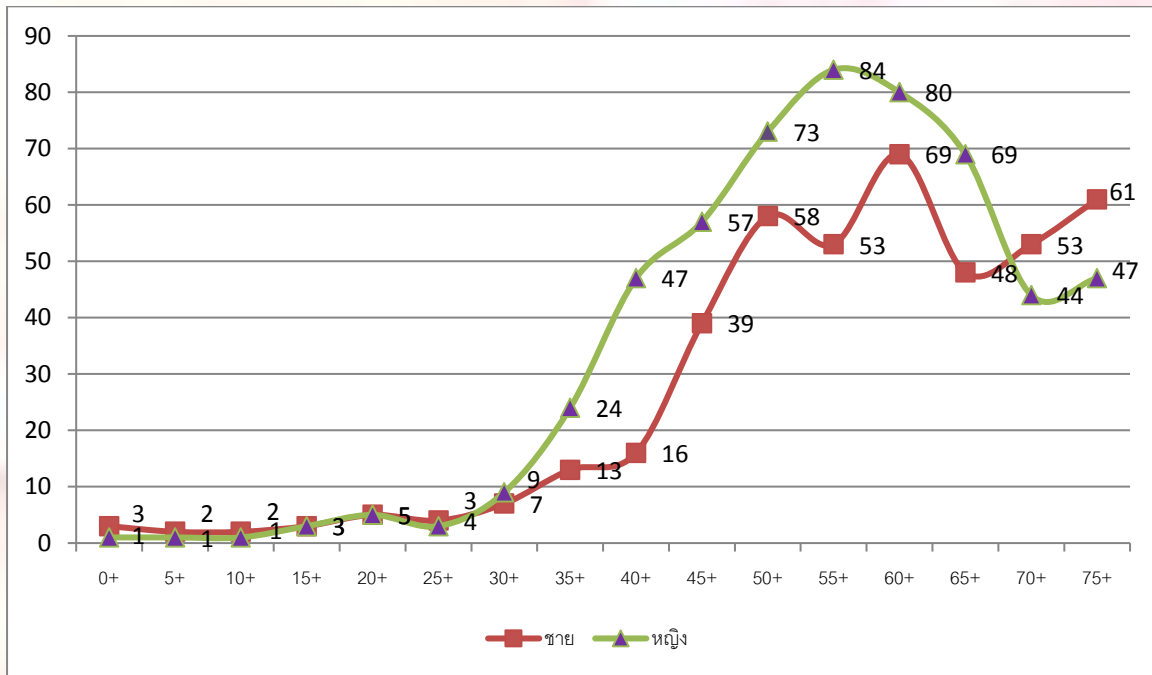


Table 6 Type of Stage of cancer site of all cancer.

Stage	male		female		Total	
	NO	%	NO	NO	%	NO
Stage 0	1	0.2	0	0.0	1	0.10
Stage 1	14	3.2	75	13.7	89	9.04
Stage 2	24	5.5	84	15.3	108	10.98
Stage 3	56	12.8	100	18.2	156	15.85
Stage 4	133	30.5	132	24.1	265	26.93
Not know	208	47.7	157	28.6	365	37.09

Figures 6 Type of Stage of cancer site of all cancer.

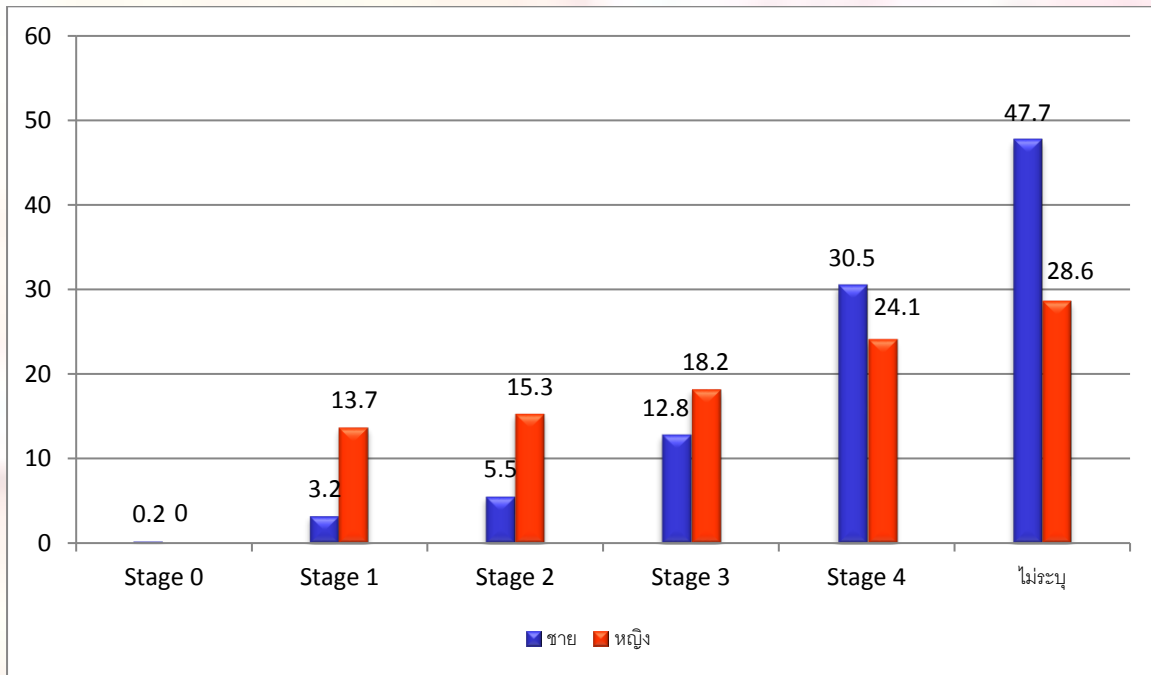


Table 7 Type of Treatment of cancer Site of all Cancer.

Treatment	NO	%
Surgery	577	36.1
Radiation	299	18.7
Chemotherapy	562	35.2
Palliative Care	160	10.0

Figures 7 Type of Treatment of cancer Site of all Cancer

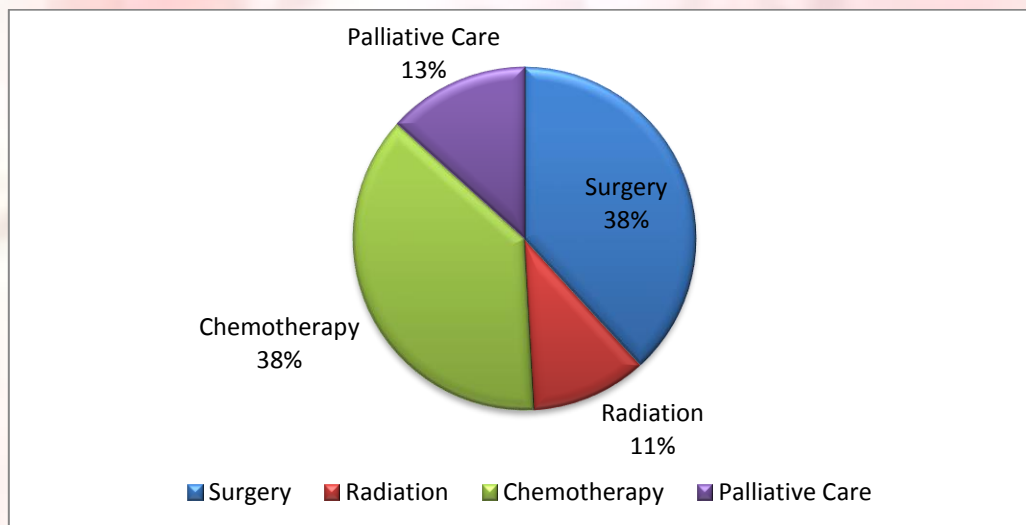


Table 8 Method of Type of Treatment.

Treatment	male		female		Total	
	NO	%	NO	%	NO	%
Chemotherapy	84	19.3	85	15.5	169	17.2
Chemotherapy + Hormone	0	0.0	6	1.1	6	0.6
Chemotherapy + Other	0	0.0	2	0.4	2	0.2
Chemotherapy + Palliative Care	6	1.4	10	1.8	16	1.6
Chemotherapy + Sup	4	0.9	4	0.7	8	0.8
Chemotherapy + Sup + Palliative Care	2	0.5	1	0.2	3	0.3
Chemotherapy + Targeted Therapy	5	1.1	1	0.2	6	0.6
Hormone	0	0.0	2	0.4	2	0.2
Interventional	0	0.0	1	0.2	1	0.1
Not Record	33	7.6	33	6.0	66	6.7
Other	11	2.5	2	0.4	13	1.3
Palliative Care	60	13.8	39	7.1	99	10.1
Radiation	9	2.1	8	1.5	17	1.7
Radiation + Chemotherapy	22	5.0	32	5.8	54	5.5
Radiation + Chemotherapy + Palliative Care	4	0.9	2	0.4	6	0.6
Radiation + Hormone	0	0.0	1	0.2	1	0.1
Radiation + Palliative Care	1	0.2	2	0.4	3	0.3
Radiation + Sup	1	0.2	0	0.0	1	0.1
Sup	69	15.8	52	9.5	121	12.3
Sup + Other	0	0.0	1	0.2	1	0.1
Sup + Palliative Care	12	2.8	16	2.9	28	2.8
Surgery	33	7.6	59	10.8	92	9.3
Surgery + Chemotherapy	31	7.1	83	15.1	114	11.6
Surgery + Chemotherapy + Hormone	3	0.7	14	2.6	17	1.7
Surgery + Chemotherapy + Hormone + Palliative Care	0	0.0	1	0.2	1	0.1
Surgery + Chemotherapy + Hormone + Sup	2	0.5	2	0.4	4	0.4



Treatment	male		female		Total	
	NO	%	NO	%	NO	%
Surgery + Chemotherapy + Hormone + Sup + Palliative Care	0	0.0	1	0.2	1	0.1
Surgery + Chemotherapy + Intraoperative Radiation	0	0.0	1	0.2	1	0.1
Surgery + Chemotherapy + Palliative Care	3	0.7	13	2.4	16	1.6
Surgery + Chemotherapy + Sup	4	0.9	5	0.9	9	0.9
Surgery + Chemotherapy + Sup + Palliative Care	1	0.2	0	0.0	1	0.1
Surgery + Chemotherapy + Targetd Therapy + Palliative Care	0	0.0	1	0.2	1	0.1
Surgery + Hormone	1	0.2	2	0.4	3	0.3
Surgery + Hormone + Palliative Care	0	0.0	2	0.4	2	0.2
Surgery + Hormone + Sup	0	0.0	1	0.2	1	0.1
Surgery + Palliative Care	2	0.5	13	2.4	15	1.5
Surgery + Radiation	5	1.1	10	1.8	15	1.5
Surgery + Radiation + Chemotherapy	12	2.8	33	6.0	45	4.6
Surgery + Radiation + Chemotherapy + Hormone	0	0.0	1	0.2	1	0.1
Surgery + Radiation + Chemotherapy + Sup	1	0.2	0	0.0	1	0.1
Surgery + Radiation + Hormone + Sup	1	0.2	0	0.0	1	0.1
Surgery + Radiation + Palliative Care	3	0.7	1	0.2	4	0.4
Surgery + Sup	8	1.8	4	0.7	12	1.2
Surgery + Sup + Concurrent RT	1	0.2	0	0.0	1	0.1
Surgery + Sup + Palliative Care	2	0.5	1	0.2	3	0.3



Table 9 Number of Cancer by Age-group in male.

ICD10	Site-Description	0+	5+	10+	15+	20+	25+	30+	35+	40+	45+	50+	55+	60+	65+	70+	75+	Total
C00-C08	Oral cavity	0	0	0	0	0	0	0	0	0	1	1	0	1	0	1	2	6
C11	Nasopharynx	0	0	0	0	0	0	0	1	0	1	1	2	0	1	0	0	6
C15	Esophagus	0	0	0	0	0	0	0	0	1	0	0	0	0	0	0	0	1
C16	Stomach	0	0	0	0	0	1	0	1	1	3	3	3	3	1	1	1	18
C18-C21	Colon and rectum	0	0	0	0	0	0	0	1	1	6	12	4	11	7	6	7	55
C22, C24	Liver and bile duct	0	0	0	0	0	0	1	1	5	9	13	19	21	14	15	15	113
C23	Gallbladder	0	0	0	0	0	0	0	0	0	0	0	0	0	1	0	1	2
C25	pancreas	0	0	0	0	0	0	0	0	0	0	0	1	1	0	1	0	3
C30-C31	Nose, sinuses etc	0	0	0	0	0	0	0	0	0	0	0	1	0	0	0	0	1
C32	Larynx	0	0	0	0	0	0	0	0	0	0	0	1	0	0	0	2	3
C33-C34	Trachea, bronchus and lung	0	0	0	0	0	0	0	2	2	2	10	8	11	8	13	13	69
C37-C38	Other thoracic organs	0	0	0	0	0	0	0	0	0	1	1	0	0	0	0	0	2
C40-C41	Bone	0	0	1	0	0	0	0	0	0	0	0	0	0	0	1	0	2
C50	Breast	0	0	0	0	0	0	0	0	0	0	1	0	0	0	0	0	1
C53	Cervix uteri	0	0	0	0	0	0	0	0	0	0	0	0	1	0	0	0	1
C60	Penis	0	0	0	0	0	0	0	0	0	1	1	1	0	0	0	0	3
C61	Prostate	0	0	0	0	0	0	0	0	0	0	0	0	2	2	1	1	6
C62	Testis	0	0	0	0	0	0	0	0	0	1	0	0	0	0	0	0	1
C67	Bladder	0	0	0	0	0	0	0	1	0	0	1	0	1	1	1	0	5

ICD10	Site-Description	0+	5+	10+	15+	20+	25+	30+	35+	40+	45+	50+	55+	60+	65+	70+	75+	Total
C70-C72	Brain, nervous system	1	1	0	1	1	0	0	0	0	1	1	1	0	1	1	0	9
C73	Thyroid	0	0	0	0	0	0	0	0	0	0	0	0	0	0	2	0	2
C81	Hodgkin disease	0	0	1	0	0	0	0	0	1	1	0	0	0	0	0	0	3
C82-C85, C96	Non-Hodgkin lymphoma	0	0	0	1	3	3	4	1	3	2	4	4	7	4	3	6	45
C90	Multiple myeloma	0	0	0	0	0	0	0	0	0	0	1	2	0	0	1	4	
C91-C95	Leukemia	2	1	0	1	1	0	2	5	2	3	3	2	2	4	1	2	31
D45-D47	Myelodysplastic	0	0	0	0	0	0	0	0	1	4	3	1	3	2	5	8	27
O&U	Other and unspecified	0	0	0	0	0	0	0	0	3	2	4	3	2	1	2	17	

Table 10 Number of Cancer by Age-group in female.

ICD10	Site-Description	0+	5+	10+	15+	20+	25+	30+	35+	40+	45+	50+	55+	60+	65+	70+	75+	Total
C00-C08	Oral cavity	0	1	0	0	0	0	1	0	0	0	0	0	0	0	2	0	4
C11	Nasopharynx	0	0	0	0	0	0	0	0	0	1	0	0	0	1	0	2	
C15	Esophagus	0	0	0	0	0	0	0	0	0	1	0	0	0	0	0	1	
C16	Stomach	0	0	0	0	1	0	0	3	3	1	1	2	2	3	1	2	19
C17	Small intestine	0	0	0	0	0	0	0	0	0	1	0	0	0	0	0	1	
C18-C21	Colon and rectum	0	0	0	0	0	0	0	1	3	3	5	11	11	3	2	4	43



ICD10	Site-Description	0+	5+	1+	1+	2+	2+	3+	3+	4+	4+	5+	5+	6+	6+	7+	7+	Total
C22, C24	Liver and bile duct	0	0	0	1	1	1	0	2	1	2	9	9	13	17	10	9	75
C23	Gallbladder	0	0	0	0	0	0	0	0	0	0	0	0	0	1	0	1	2
C25	pancrease	0	0	0	0	0	0	0	0	0	0	0	0	0	0	1	1	2
C30-C31	Nose, sinuses etc	0	0	0	0	0	0	0	0	0	0	0	0	1	0	0	0	1
C33-C34	Trachea, brochus and lung	0	0	0	0	0	0	0	1	3	2	5	4	10	5	5	8	43
C40-C41	Bone	0	0	0	0	0	0	0	0	0	0	0	0	1	0	0	0	1
C44	Other skin	0	0	0	0	0	0	0	0	0	0	1	0	0	0	1	0	2
C50	Breast	0	0	0	0	0	0	2	7	15	17	11	20	13	11	3	7	106
C51	Vulva	0	0	0	0	0	0	0	0	0	0	0	1	0	0	0	1	2
C53	Cervix uteri	0	0	0	0	2	2	2	2	10	12	7	8	7	6	5	0	63
C54	Corpus uteri	0	0	0	0	0	0	0	0	4	3	9	9	5	3	2	1	36
C56	Ovary	0	0	0	0	0	0	1	2	4	4	4	4	1	3	3	1	27
C58	Placenta	0	0	0	0	0	0	1	0	0	1	1	1	0	0	0	0	4
C65	Renal pelvis	0	0	0	0	0	0	0	0	0	0	1	0	0	0	0	0	1
C70-C72	Brain, nervous system	0	0	0	0	0	0	1	0	1	2	6	1	3	0	0	0	14
C73	Thyroid	0	0	0	0	0	0	0	0	0	0	2	0	0	0	0	0	2
C81	Hodgkin disease	0	0	0	0	0	0	0	0	0	0	0	0	0	0	0	1	1
C82-C85, C96	Non-Hodgkin lymphoma	0	0	0	0	1	0	0	3	0	3	4	6	6	4	4	4	35
C90	Multiple myeloma	1	0	0	0	0	0	0	0	0	0	0	1	2	5	0	1	10

ICD10	Site- Description	0 +	5 +	1 +	1 5 +	2 0 +	2 5 +	3 0 +	3 5 +	4 0 +	4 5 +	5 0 +	5 5 +	6 0 +	6 5 +	7 0 +	7 5 +	To tal
C91- C95	Leukemia	0	0	1	2	0	0	1	2	1	6	1	2	0	2	1	3	22
D45- D47	Myelodys plastic	0	0	0	0	0	0	0	0	0	0	1	3	3	4	1	2	14
O&U	Other and unspecified	0	0	0	0	0	0	0	1	2	1	2	2	2	2	2	1	15

Table 11 Pathology According to site.

Disease group	ICD10	Pathology	Mor Pathology Description	male	female	total
Oral cavity	C01	8070	Squamous cell carcinoma, NOS	0	1	1
Oral cavity	C023	8070	Squamous cell carcinoma, NOS	1	0	1
Oral cavity	C029	8000	Neoplasm, malignant	1	0	1
Oral cavity	C029	8070	Squamous cell carcinoma, NOS	2	1	3
Oral cavity	C031	8070	Squamous cell carcinoma, NOS	0	1	1
Oral cavity	C039	8070	Squamous cell carcinoma, NOS	1	0	1
Oral cavity	C07	8200	Adenoid cystic carcinoma	1	0	1
Oral cavity	C080	8430	Mucoepidermoid carcinoma	0	1	1
Nasopharynx	C112	8010	Carcinoma, NOS	1	0	1
Nasopharynx	C112	8010	Carcinomatosis	1	0	1
Nasopharynx	C118	8020	Carcinoma, undifferentiated, NOS	1	0	1
Nasopharynx	C119	8010	Carcinoma, NOS	1	0	1
Nasopharynx	C119	8010	Carcinomatosis	1	0	1
Nasopharynx	C119	8020	Carcinoma, undifferentiated, NOS	2	2	4



Disease group	ICD10	Pathology	Mor Pathology Description	male	female	tatal
Nasopharynx	C119	8815	Solitary fibrous tumor, malignant	1	0	1
Esophagus	C159	8070	Squamous cell carcinoma, NOS	0	1	1
Esophagus	C159	8071	Squamous cell carcinoma, keratinizing, NOS	1	0	1
Stomach	C160	8140	Adenocarcinoma, NOS	1	0	1
Stomach	C163	8140	Adenocarcinoma, NOS	1	2	3
Stomach	C163	8490	Metastatic signet ring cell carcinoma	0	1	1
Stomach	C163	8490	Signet ring cell carcinoma	0	1	1
Stomach	C168	8140	Adenocarcinoma, NOS	0	1	1
Stomach	C169	8000	Neoplasm, malignant	1	2	3
Stomach	C169	8012	Large cell carcinoma, NOS	0	1	1
Stomach	C169	8070	Squamous cell carcinoma, NOS	1	1	2
Stomach	C169	8140	Adenocarcinoma, NOS	7	7	14
Stomach	C169	8144	Adenocarcinoma, intestinal type	6	1	7
Stomach	C169	8490	Metastatic signet ring cell carcinoma	1	3	4
Stomach	C169	8490	Signet ring cell carcinoma	1	3	4
Small intestine	C179	8140	Adenocarcinoma, NOS	0	1	1
Colon and rectum	C180	8140	Adenocarcinoma, NOS	2	1	3
Colon and rectum	C180	8290	Oxyphilic adenocarcinoma	0	1	1



Disease group	ICD10	Pathology	Mor Pathology Description	male	female	tatal
Colon and rectum	C182	8000	Neoplasm, malignant	0	1	1
Colon and rectum	C182	8140	Adenocarcinoma, NOS	4	1	5
Colon and rectum	C182	8010	Carcinoma, NOS	1	0	1
Colon and rectum	C182	8010	Carcinomatosis	1	0	1
Colon and rectum	C184	8140	Adenocarcinoma, NOS	2	3	5
Colon and rectum	C186	8140	Adenocarcinoma, NOS	1	4	5
Colon and rectum	C186	8000	Neoplasm, malignant	1	0	1
Colon and rectum	C187	8140	Adenocarcinoma, NOS	12	10	22
Colon and rectum	C187	8010	Carcinoma, NOS	2	0	2
Colon and rectum	C187	8010	Carcinomatosis	2	0	2
Colon and rectum	C189	8140	Adenocarcinoma, NOS	3	4	7
Colon and rectum	C19	8000	Neoplasm, malignant	2	0	2
Colon and rectum	C19	8140	Adenocarcinoma, NOS	2	5	7
Colon and rectum	C20	8010	Carcinoma, NOS	2	0	2
Colon and rectum	C20	8010	Carcinomatosis	2	0	2
Colon and rectum	C20	8140	Adenocarcinoma, NOS	18	11	29
Colon and rectum	C20	8000	Neoplasm, malignant	2	2	4



Disease group	ICD10	Pathology	Mor Pathology Description	male	female	tatal
Colon and rectum	C211	8072	Squamous cell carcinoma, large cell, nonkeratinizing, NOS	1	0	1
Liver and bile duct	C220	8170	Hepatocellular carcinoma, NOS	30	12	42
Liver and bile duct	C221	8140	Adenocarcinoma, NOS	1	3	4
Liver and bile duct	C221	8160	Cholangiocarcinoma	70	51	121
Liver and bile duct	C221	8160	Bile duct adenoma	70	51	121
Liver and bile duct	C227	8050	Papillary carcinoma, NOS	0	1	1
Liver and bile duct	C229	8000	Neoplasm, malignant	8	6	14
Liver and bile duct	C240	8010	Carcinoma, NOS	2	2	4
Liver and bile duct	C240	8010	Carcinomatosis	2	2	4
Liver and bile duct	C241	8010	Carcinoma, NOS	2	0	2
Liver and bile duct	C241	8010	Carcinomatosis	2	0	2
Gallbladder	C23	8000	Neoplasm, malignant	1	0	1
Gallbladder	C23	8010	Carcinoma, NOS	1	1	2
Gallbladder	C23	8010	Carcinomatosis	1	1	2
Gallbladder	C23	8140	Adenocarcinoma, NOS	0	1	1
pancrease	C250	8010	Carcinoma, NOS	2	0	2
pancrease	C250	8010	Carcinomatosis	2	0	2
pancrease	C250	8160	Cholangiocarcinoma	1	0	1
pancrease	C250	8160	Bile duct adenoma	1	0	1
pancrease	C259	8000	Neoplasm, malignant	0	1	1
pancrease	C259	8140	Adenocarcinoma, NOS	0	1	1



Disease group	ICD10	Pathology	Mor Pathology Description	male	female	tatal
Nose,sinuses etc	C300	8053	Squamous cell papilloma, inverted	0	1	1
Nose,sinuses etc	C319	8000	Neoplasm, malignant	1	0	1
Larynx	C321	8246	Neuroendocrine carcinoma, NOS	1	0	1
Larynx	C329	8070	Squamous cell carcinoma, NOS	2	0	2
Trachea, brochus and lung	C341	8046	Non-small cell carcinoma	1	0	1
Trachea, brochus and lung	C341	8070	Squamous cell carcinoma, NOS	0	1	1
Trachea, brochus and lung	C341	8140	Adenocarcinoma, NOS	1	0	1
Trachea, brochus and lung	C349	8000	Neoplasm, malignant	27	15	42
Trachea, brochus and lung	C349	8041	Small cell carcinoma, NOS	3	1	4
Trachea, brochus and lung	C349	8046	Non-small cell carcinoma	6	1	7
Trachea, brochus and lung	C349	8140	Adenocarcinoma, NOS	13	18	31
Trachea, brochus and lung	C349	8246	Neuroendocrine carcinoma, NOS	1	0	1
Trachea, brochus and lung	C349	8010	Carcinoma, NOS	5	4	9
Trachea, brochus and lung	C349	8010	Carcinomatosis	5	4	9
Trachea, brochus and lung	C349	8012	Large cell carcinoma, NOS	1	0	1
Trachea, brochus and lung	C349	8013	Large cell neuroendocrine carcinoma	0	1	1
Trachea, brochus and lung	C349	8020	Carcinoma, undifferentiated, NOS	4	1	5
Trachea, brochus and lung	C349	8070	Squamous cell carcinoma, NOS	6	1	7



Disease group	ICD10	Pathology	Mor Pathology Description	male	female	tatal
Trachea, brochus and lung	C349	8575	Metaplastic carcinoma, NOS	1	0	1
Other thoracic organs	C37	8000	Neoplasm, malignant	1	0	1
Other thoracic organs	C37	8586	Thymic carcinoma, NOS	1	0	1
Bone	C410	8072	Squamous cell carcinoma, large cell, nonkeratinizing, NOS	1	0	1
Bone	C410	8140	Adenocarcinoma, NOS	0	1	1
Bone	C419	9184	Osteosarocma in Paget disease of bone	1	0	1
Other skin	C443	8090	Basal cell carcinoma, NOS	0	1	1
Other skin	C449	8010	Carcinoma, NOS	0	1	1
Other skin	C449	8010	Carcinomatosis	0	1	1
Breast	C502	8230	Solid carcinoma, NOS	0	1	1
Breast	C502	8500	Infiltrating duct carcinoma, NOS	0	5	5
Breast	C502	8520	Lobular carcinoma, NOS	0	1	1
Breast	C503	8500	Infiltrating duct carcinoma, NOS	0	3	3
Breast	C503	8520	Lobular carcinoma, NOS	0	1	1
Breast	C504	8500	Infiltrating duct carcinoma, NOS	0	7	7
Breast	C505	8500	Infiltrating duct carcinoma, NOS	0	5	5
Breast	C505	8503	Intraductal paillary adenocarcinoma with invasion	0	1	1



Disease group	ICD10	Pathology	Mor Pathology Description	male	female	tatal
Breast	C505	8523	Infiltrating duct mixed with other types of carcinoma	0	1	1
Breast	C509	8000	Neoplasm, malignant	0	2	2
Breast	C509	8010	Carcinoma, NOS	0	2	2
Breast	C509	8010	Carcinomatosis	0	2	2
Breast	C509	8140	Adenocarcinoma, NOS	0	3	3
Breast	C509	8480	Mucinous adenocarcinoma	0	3	3
Breast	C509	8500	Infiltrating duct carcinoma, NOS	1	65	66
Breast	C509	8503	Intraductal paillary adenocarcinoma with invasion	0	1	1
Breast	C509	8520	Lobular carcinoma, NOS	0	2	2
Breast	C509	8230	Solid carcinoma, NOS	0	1	1
Breast	C509	9020	Phyllodes tumor, malignant	0	1	1
Vulva	C519	8070	Squamous cell carcinoma, NOS	0	2	2
Cervix uteri	C530	8071	Squamous cell carcinoma, keratinizing, NOS	0	1	1
Cervix uteri	C530	8140	Adenocarcinoma, NOS	1	11	12
Cervix uteri	C530	8560	Adenosquamous carcinoma	0	1	1
Cervix uteri	C530	8070	Squamous cell carcinoma, NOS	0	1	1
Cervix uteri	C531	8070	Squamous cell carcinoma, NOS	0	4	4



Disease group	ICD10	Pathology	Mor Pathology Description	male	female	total
Cervix uteri	C531	8071	Squamous cell carcinoma, keratinizing, NOS	0	7	7
Cervix uteri	C531	8072	Squamous cell carcinoma, large cell, nonkeratinizing, NOS	0	8	8
Cervix uteri	C531	8020	Carcinoma, undifferentiated, NOS	0	1	1
Cervix uteri	C531	8041	Small cell carcinoma, NOS	0	2	2
Cervix uteri	C539	8070	Squamous cell carcinoma, NOS	0	16	16
Cervix uteri	C539	8071	Squamous cell carcinoma, keratinizing, NOS	0	2	2
Cervix uteri	C539	8072	Squamous cell carcinoma, large cell, nonkeratinizing, NOS	0	5	5
Cervix uteri	C539	8140	Adenocarcinoma, NOS	0	4	4
Corpus uteri	C541	8380	Endometrioid adenocarcinoma, NOS	0	29	29
Corpus uteri	C541	8460	Papillary serous cystadenocarcinoma	0	2	2
Corpus uteri	C541	8930	Endometrial stromal sarcoma, NOS	0	1	1
Corpus uteri	C541	8931	Endometrial stromal sarcoma, low grade	0	1	1
Corpus uteri	C542	8890	Leiomyosarcoma, NOS	0	1	1
Corpus uteri	C542	8950	Mullerian mixed tumor	0	1	1
Corpus uteri	C549	8380	Endometrioid adenocarcinoma, NOS	0	1	1
Ovary	C56	8000	Neoplasm, malignant	0	4	4



Disease group	ICD10	Pathology	Mor Pathology Description	male	female	tatal
Ovary	C56	8140	Adenocarcinoma, NOS	0	1	1
Ovary	C56	8380	Endometrioid adenocarcinoma, NOS	0	4	4
Ovary	C56	8441	Serous cystadenocarcinoma, NOS	0	7	7
Ovary	C56	8470	Mucinous cystadenocarcinoma, NOS	0	5	5
Ovary	C56	8620	Granulosa cell tumor, malignant	0	1	1
Ovary	C56	9060	Dysgerminoma	0	1	1
Ovary	C56	8070	Squamous cell carcinoma, NOS	0	1	1
Placenta	C58	9100	Choriocarcinoma, NOS	0	4	4
Penis	C609	8010	Carcinoma, NOS	1	0	1
Penis	C609	8010	Carcinomatosis	1	0	1
Penis	C609	8070	Squamous cell carcinoma, NOS	1	0	1
Penis	C609	8071	Squamous cell carcinoma, keratinizing, NOS	1	0	1
Prostate	C61	8000	Neoplasm, malignant	1	0	1
Prostate	C61	8001	Tumor cells, malignant	1	0	1
Prostate	C61	8010	Carcinoma, NOS	3	0	3
Prostate	C61	8010	Carcinomatosis	3	0	3
Prostate	C61	8140	Adenocarcinoma, NOS	1	0	1
Testis	C629	8000	Neoplasm, malignant	1	0	1
Renal pelvis	C65	8010	Carcinoma, NOS	0	1	1
Renal pelvis	C65	8010	Carcinomatosis	0	1	1



Disease group	ICD10	Pathology	Mor Pathology Description	male	female	tatal
Bladder	C670	8260	Papillary adenocarcinoma, NOS	1	0	1
Bladder	C679	8001	Tumor cells, malignant	1	0	1
Bladder	C679	8010	Carcinoma, NOS	1	0	1
Bladder	C679	8010	Carcinomatosis	1	0	1
Bladder	C679	8050	Papillary carcinoma, NOS	1	0	1
Bladder	C679	8082	Lymphoepithelial carcinoma	1	0	1
Brain, nervous system	C700	9530	Meningioma, malignant	1	8	9
Brain, nervous system	C700	9539	Meningeal sarcomatosis	1	1	2
Brain, nervous system	C711	9450	Oligodendroglioma, NOS	1	0	1
Brain, nervous system	C719	8000	Neoplasm, malignant	2	2	4
Brain, nervous system	C719	8004	Malignant tumor, spindle cell type	0	1	1
Brain, nervous system	C719	8041	Small cell carcinoma, NOS	0	1	1
Brain, nervous system	C719	8140	Adenocarcinoma, NOS	0	1	1
Brain, nervous system	C719	8800	Sarcoma, NOS	1	0	1
Brain, nervous system	C719	9401	Astrocytoma, anaplastic	2	0	2
Brain, nervous system	C719	9500	Neuroblastoma, NOS	1	0	1
Thyroid	C73	8021	Carcinoma, anaplastic, NOS	1	0	1
Thyroid	C73	8050	Papillary carcinoma, NOS	1	2	3



Disease group	ICD10	Pathology	Mor Pathology Description	male	female	total
Hodgkin disease	C810	9659	Hodgkin lymphoma, nodular lymphocyte predominance	3	1	4
Non-Hodgkin lymphoma	C822	9698	Follicular lymphoma, grade 3	2	3	5
Non-Hodgkin lymphoma	C827	9699	Marginal zone B-cell lymphoma, NOS	2	2	4
Non-Hodgkin lymphoma	C833	9680	Malignant lymphoma, large B-cell, diffuse, NOS	30	22	52
Non-Hodgkin lymphoma	C835	9728	Precursor B-cell lymphoblastic lymphoma	0	1	1
Non-Hodgkin lymphoma	C838	9673	Mantle cell lymphoma	1	1	2
Non-Hodgkin lymphoma	C838	9679	Mediastinal large B-cell lymphoma	1	0	1
Non-Hodgkin lymphoma	C838	9689	Splenic marginal zone B-cell lymphoma	0	1	1
Non-Hodgkin lymphoma	C844	9702	Mature T-cell lymphoma, NOS	1	2	3
Non-Hodgkin lymphoma	C844	9705	Angioimmunoblastic T-cell lymphoma	2	0	2
Non-Hodgkin lymphoma	C845	9708	Subcutaneous panniculitis-like T-cell lymphoma	0	1	1
Non-Hodgkin lymphoma	C845	9714	Anaplastic large cell lymphoma, T-cell and null cell type	2	0	2
Non-Hodgkin lymphoma	C845	9719	NK/T-cell lymphoma, nasal and nasal-type	1	0	1
Non-Hodgkin lymphoma	C859	9591	Malignant lymphoma, non-Hodgkin, NOS	2	1	3



Disease group	ICD10	Pathology	Mor Pathology Description	male	female	total
Non-Hodgkin lymphoma	C859	9590	Malignant lymphoma, NOS	1	0	1
Non-Hodgkin lymphoma	C963	9755	Histiocytic sarcoma	0	1	1
Multiple myeloma	C900	9732	Multiple myeloma	4	10	14
Leukemia	C910	9835	Precursor cell lymphoblastic leukemia, NOS	8	1	9
Leukemia	C911	9823	B-cell chronic lymphocytic leukemia/small lymphocytic lymphoma	1	1	2
Leukemia	C920	9896	Acute myeloid leukemia, t(8;21)(q22;q22)	13	13	26
Leukemia	C921	9875	Chronic myelogenous leukemia, BCR/ABL positive	6	3	9
Leukemia	C924	9866	Acute promyelocytic leukemia, t(15;17)(q22;q11-12)	1	2	3
Leukemia	C950	9801	Acute leukemia, NOS	1	2	3
Leukemia	C959	9800	Leukemia, NOS	1	0	1
Myelodysplastic	D45	9950	Polycythemia vera	2	1	3
Myelodysplastic	D469	9989	Myelodysplastic syndrome, NOS	13	8	21
Myelodysplastic	D471	9960	Chronic myeloproliferative disease, NOS	3	1	4
Myelodysplastic	D471	9961	Myelofibrosis with myeloid metaplasia	1	0	1
Myelodysplastic	D473	9962	Essential thrombocythemia	3	4	7



Disease group	ICD10	Pathology	Mor Pathology Description	male	female	tatal
Myelodysplastic	D477	9964	Hypereosinophilic syndrome	2	0	2
Myelodysplastic	D479	9975	Myeloproliferative disease, NOS	3	0	3
Other and unspecified	#	8000	Neoplasm, malignant	0	1	1
Other and unspecified	#	8070	Squamous cell carcinoma, NOS	2	0	2
Other and unspecified	#	8140	Adenocarcinoma, NOS	5	3	8
Other and unspecified	#	8144	Adenocarcinoma, intestinal type	1	0	1
Other and unspecified	#	8160	Cholangiocarcinoma	6	4	10
Other and unspecified	#	8160	Bile duct adenoma	6	4	10
Other and unspecified	#	8170	Hepatocellular carcinoma, NOS	3	0	3
Other and unspecified	#	8500	Infiltrating duct carcinoma, NOS	0	3	3
Other and unspecified	#	8520	Lobular carcinoma, NOS	0	1	1
Other and unspecified	C269	8470	Mucinous cystadenocarcinoma, NOS	0	1	1
Other and unspecified	C482	8140	Adenocarcinoma, NOS	0	1	1
Other and unspecified	C482	8441	Serous cystadenocarcinoma, NOS	0	1	1

The Most Common Cancer in Sakonnakorn Hospital-Based

- 1 • Liver cancer & cholangiocarcinoma
- 2 • Lung cancer
- 3 • Breast cancer
- 4 • Colorectal cancer
- 5 • Lymphoma



1. Liver cancer & cholangiocarcinoma.

Table 12 Type of Diagnosis of cancer site Liver cancer & cholangiocarcinoma.

Diagnosis	male		female		Total	
	NO	%	NO	%	NO	%
History & Physical exam	12	3.04	25	4.97	37	4.12
Endoscopy & Radiohogy	155	39.24	94	18.69	249	27.73
Forensic autopsy	1	0.25	0	0	1	0.11
Specfic Biochem/Immuno test	0	0	9	1.79	9	1
Cytology & Hematology	6	1.52	8	1.59	14	1.56
History of matastasis	1	0.25	13	2.58	14	1.56
Histology of primary	220	55.7	352	69.98	572	63.7
Forensic autopsy & Biopsy	0	0	2	0.4	2	0.22

Table 13 Type of Extension of cancer site of Liver cancer & cholangiocarcinoma.

Extension	male		female		Total	
	NO	%	NO	%	NO	%
1 In situ	0	0	5	0.99	5	0.56
2 Localized	23	5.82	120	23.86	143	15.92
3 Direct extension	19	4.81	38	7.55	57	6.35
4 Regional lymph nodes	25	6.33	63	12.52	88	9.8
5 Distant metastasis	128	32.41	124	24.65	252	28.06
8 Not applicable	44	11.14	39	7.75	83	9.24
9 Not know	156	39.49	114	22.66	270	30.07

Figures 8 Number by Age-group and sex of Liver cancer & cholangiocarcinoma.

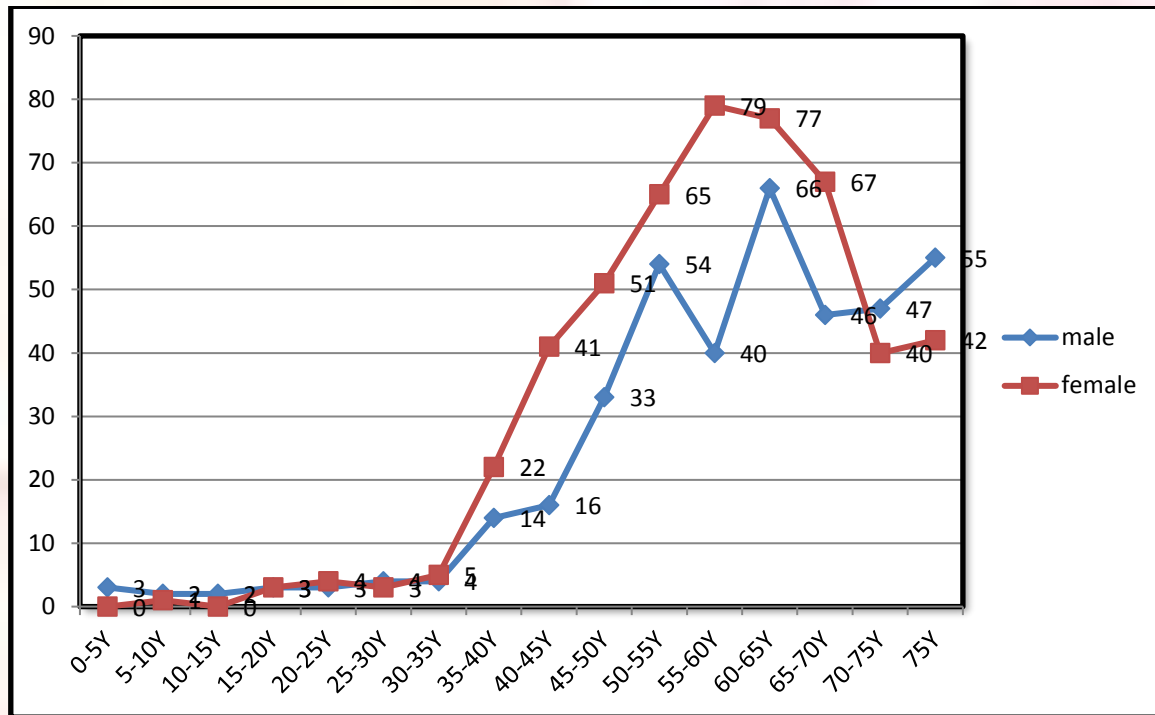


Table 14 Type of Stage of cancer site of Liver cancer & cholangiocarcinoma.

Stage	male		female		Total	
	NO	%	NO	%	NO	%
Stage 0	1	0.25	0	0	1	0.11
Stage 1	13	3.29	67	13.32	80	8.91
Stage 2	23	5.82	75	14.91	98	10.91
Stage 3	47	11.9	92	18.29	139	15.48
Stage 4	117	29.62	120	23.86	237	26.39
Not Khow	194	49.11	149	29.62	343	38.2



Table 15 Method of Type of Treatment

Method of treatment	male		female		Total	
	NO	%	NO	%	NO	%
Not Record	39	9.87	33	6.56	72	8.02
Surgery	29	7.34	53	10.54	82	9.13
Radiation	5	1.27	6	1.19	11	1.22
Chemotherapy	80	20.25	77	15.31	157	17.48
Hormone	0	0	2	0.4	2	0.22
Sup	60	15.19	50	9.94	110	12.25
Interventional	0	0	1	0.2	1	0.11
Other	7	1.77	1	0.2	8	0.89
Palliative Care	56	14.18	34	6.76	90	10.02
Surgery + Radiation	5	1.27	5	0.99	10	1.11
Surgery + Chemotherapy	27	6.84	78	15.51	105	11.69
Surgery + Hormone	1	0.25	2	0.4	3	0.33
Surgery + Sup	8	2.03	4	0.8	12	1.34
Surgery + Palliative Care	1	0.25	13	2.58	14	1.56
Radiation + Chemotherapy	18	4.56	30	5.96	48	5.35
Radiation + Hormone	0	0	1	0.2	1	0.11
Radiation + Sup	1	0.25	0	0	1	0.11
Radiation + Palliative Care	1	0.25	2	0.4	3	0.33
Chemotherapy + Hormone	0	0	6	1.19	6	0.67
Chemotherapy + Sup	4	1.01	4	0.8	8	0.89
Chemotherapy + Other	0	0	2	0.4	2	0.22



Method of treatment	male		female		Total	
	NO	%	NO	%	NO	%
Chemotherapy + Targetd Therapy	5	1.27	1	0.2	6	0.67
Chemotherapy + Palliative Care	4	1.01	9	1.79	13	1.45
Sup + Palliative Care	9	2.28	16	3.18	25	2.78
Surgery + Radiation + Chemotherapy	9	2.28	28	5.57	37	4.12
Surgery + Radiation + Palliative Care	3	0.76	1	0.2	4	0.45
Surgery + Chemotherapy + Hormone	3	0.76	13	2.58	16	1.78
Surgery + Chemotherapy + Sup	3	0.76	5	0.99	8	0.89
Surgery + Chemotherapy + Palliative Care	3	0.76	13	2.58	16	1.78
Surgery + Chemotherapy + Intraoperative Radiation	0	0	1	0.2	1	0.11
Surgery + Hormone + Sup	0	0	1	0.2	1	0.11
Surgery + Hormone + Palliative Care	0	0	2	0.4	2	0.22
Surgery + Sup + Palliative Care	3	0.76	1	0.2	4	0.45
Radiation + Chemotherapy + Palliative Care	4	1.01	1	0.2	5	0.56

Method of treatment	male		female		Total	
	NO	%	NO	%	NO	%
Chemotherapy + Sup + Palliative Care	2	0.51	1	0.2	3	0.33
Surgery + Radiation + Chemotherapy + Hormone	0	0	1	0.2	1	0.11
Surgery + Radiation + Chemotherapy + Sup	1	0.25	0	0	1	0.11
Surgery + Radiation + Hormone + Sup	1	0.25	0	0	1	0.11
Surgery + Chemotherapy + Hormone + Sup	2	0.51	2	0.4	4	0.45
Surgery + Chemotherapy + Hormone + Palliative Care	0	0	1	0.2	1	0.11
Surgery + Chemotherapy + Sup + Palliative Care	1	0.25	0	0	1	0.11
Surgery + Chemotherapy + Targetd Therapy + Palliative Care	0	0	1	0.2	1	0.11

2. Lung cancer

Table 16 Type of Diagnosis of cancer site of Lung cancer.

Diagnosis	male		female		Total	
	NO	%	NO	%	NO	%
History & Physical exam	4	6.56	1	2.44	5	4.9
Endoscopy & Radiohogy	23	37.7	15	36.59	38	37.25
Specific Biochem/Immuno test	0	0	1	2.44	1	0.98
Cytology & Hematology	2	3.28	4	9.76	6	5.88
History of matastasis	0	0	3	7.32	3	2.94
Histology of primary	32	52.46	16	39.02	48	47.06
Forensic autopsy & Biopsy	0	0	1	2.44	1	0.98

Tabel 17 Type of Extension of cancer site of Lung cancer.

Extension	male		female		Total	
	NO	%	NO	%	NO	%
Localized	1	1.64	0	0	1	0.98
Direct extension	1	1.64	1	2.44	2	1.96
Regional lymph nodes	1	1.64	1	2.44	2	1.96
Distant metastasis	45	73.77	28	68.29	73	71.57
Not applicable	1	1.64	0	0	1	0.98
Not know	12	19.67	11	26.83	23	22.55

Figures 9 Number by Age-group and sex of Lung cancer.

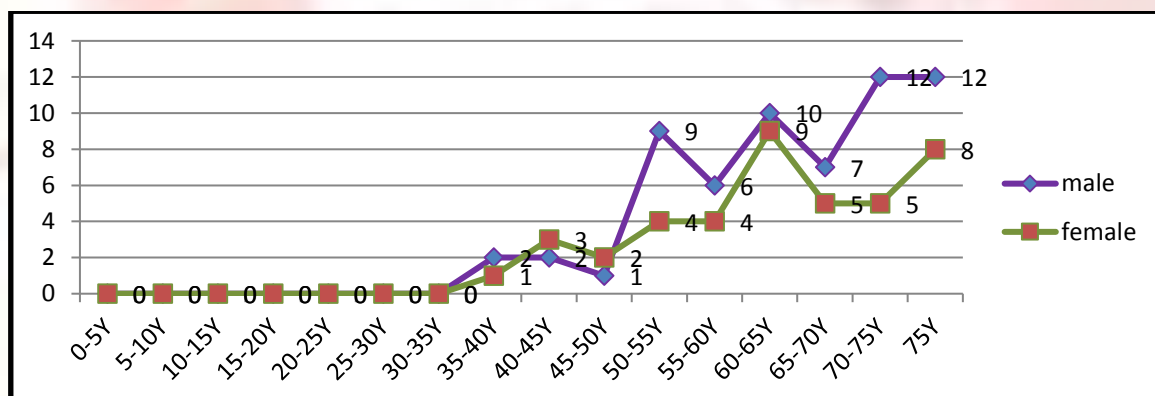


Table 18 Type of Stage of cancer site of Lung cancer.

Stage	male		female		Total	
	NO	%	NO	%	NO	%
Stage 3	13	21.31	6	14.63	19	18.63
Stage 4	36	59.02	26	63.41	62	60.78
Not know	12	19.67	9	21.95	21	20.59

Table 19 Method of treatment of Lung cancer.

Method of treatment	male		female		Total	
	NO	%	NO	%	NO	%
Not Record	5	8.2	2	4.88	7	6.86
Surgery	2	3.28	0	0	2	1.96
Radiation	1	1.64	2	4.88	3	2.94
Chemotherapy	11	18.03	7	17.07	18	17.65
Sup	6	9.84	6	14.63	12	11.76
Palliative Care	6	9.84	3	7.32	9	8.82
Surgery + Chemotherapy	3	4.92	1	2.44	4	3.92
Surgery + Sup	1	1.64	1	2.44	2	1.96
Radiation + Chemotherapy	5	8.2	6	14.63	11	10.78
Radiation + Palliative Care	1	1.64	0	0	1	0.98
Chemotherapy + Sup	0	0	1	2.44	1	0.98
Chemotherapy + Palliative Care	3	4.92	1	2.44	4	3.92
Sup + Palliative Care	5	8.2	6	14.63	11	10.78
Surgery + Radiation + Chemotherapy	1	1.64	0	0	1	0.98
Surgery + Chemotherapy + Sup	2	3.28	2	4.88	4	3.92
Surgery + Hormone + Sup	0	0	1	2.44	1	0.98
Radiation + Chemotherapy + Palliative Care	4	6.56	1	2.44	5	4.9
Chemotherapy + Sup + Palliative Care	1	1.64	0	0	1	0.98

Method of treatment	male		female		Total	
	NO	%	NO	%	NO	%
Surgery + Radiation + Chemotherapy + Sup	1	1.64	0	0	1	0.98
Surgery + Radiation + Hormone + Sup	1	1.64	0	0	1	0.98
Surgery + Chemotherapy + Hormone + Sup	2	3.28	0	0	2	1.96
Surgery + Chemotherapy + Hormone + Sup + Palliative Care	0	0	1	2.44	1	0.98

3. Breast cancer

Table 20 Type Of Diagnosis of cancer site of Breast cancer.

Diagnosis	male		female		Total	
	NO	%	NO	%	NO	%
History & Physical exam	0	0	1	0.97	1	0.96
Endoscopy & Radiohogy	0	0	1	0.97	1	0.96
History of matastasis	0	0	3	2.91	3	2.88
Histology of primary	1	100	97	94.17	98	94.23
Forensic autopsy & Biopsy	0	0	1	0.97	1	0.96

Tabel 21 Type Of Extension of cancer site of Breast cancer.

Extension	male		female		Total	
	NO	%	NO	%	NO	%
1 In situ	0	0	2	1.94	2	1.92
2 Localized	1	100	54	52.43	55	52.88
4 Regional lymph nodes	0	0	22	21.36	22	21.15
5 Distant metastasis	0	0	19	18.45	19	18.27
8 Not applicable	0	0	1	0.97	1	0.96
9 Not know	0	0	5	4.85	5	4.81

Figures 10 Number by Age-group and sex of Breast cancer.

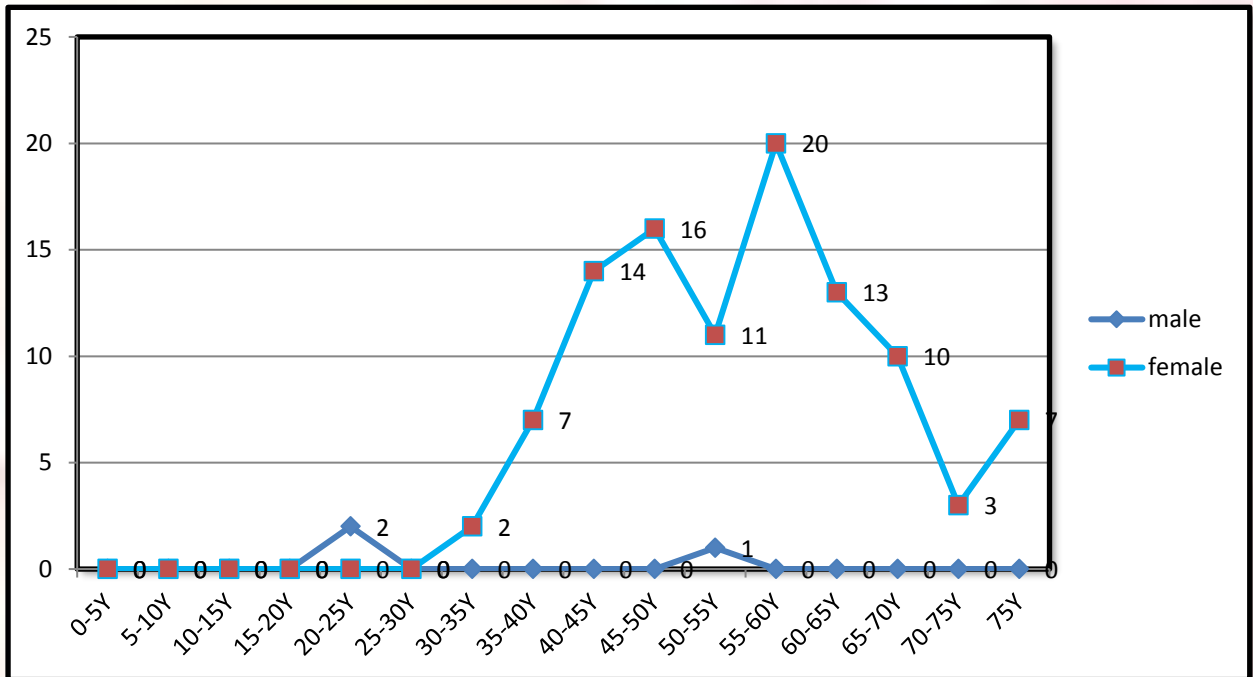


Table 22 Type of Stage of cancer site of Breast cancer.

Stage	male		female		Total	
	NO	%	NO	%	NO	%
Stage 1	0	0	11	10.68	11	10.58
Stage 2	1	100	34	33.01	35	33.65
Stage 3	0	0	31	30.1	31	29.81
Stage 4	0	0	19	18.45	19	18.27
Not know	0	0	8	7.77	8	7.69

Table 23 Method of treatment of Breast cancer.

Method of treatment	male		female		Total	
	NO	%	NO	%	NO	%
Not Record	0	0	2	1.94	2	1.92
Surgery	0	0	6	5.83	6	5.77
Radiation	0	0	2	1.94	2	1.92
Chemotherapy	0	0	8	7.77	8	7.69
Hormone	0	0	2	1.94	2	1.92
Surgery + Radiation	0	0	1	0.97	1	0.96
Surgery + Chemotherapy	0	0	25	24.27	25	24.04
Surgery + Hormone	0	0	2	1.94	2	1.92
Surgery + Palliative Care	0	0	1	0.97	1	0.96
Radiation + Chemotherapy	0	0	6	5.83	6	5.77
Radiation + Hormone	0	0	1	0.97	1	0.96
Chemotherapy + Hormone	0	0	4	3.88	4	3.85
Chemotherapy + Palliative Care	0	0	1	0.97	1	0.96
Surgery + Radiation + Chemotherapy	0	0	18	17.48	18	17.31
Surgery + Chemotherapy + Hormone	1	100	9	8.74	10	9.62
Surgery + Chemotherapy + Sup	0	0	2	1.94	2	1.92
Surgery + Chemotherapy + Palliative Care	0	0	6	5.83	6	5.77
Surgery + Hormone + Palliative Care	0	0	2	1.94	2	1.92
Surgery + Radiation + Chemotherapy + Hormone	0	0	1	0.97	1	0.96
Surgery + Chemotherapy + Hormone + Sup	0	0	2	1.94	2	1.92
Surgery + Chemotherapy + Hormone + Palliative Care	0	0	1	0.97	1	0.96
Surgery + Chemotherapy + Targetd Therapy + Palliative Care	0	0	1	0.97	1	0.96

4. Colorectal cancer

Table 24 Type of Diagnosis of cancer site of Colorectal cancer.

Diagnosis	male		female		Total	
	NO	%	NO	%	NO	%
History & Physical exam	16	2.82	56	9	72	6.05
Endoscopy & Radiohogy	210	36.97	137	22.03	347	29.16
History of matastasis	5	0.88	9	1.45	14	1.18
Histology of primary	331	58.27	402	64.63	733	61.6

Tabel 25 Type of Extension of cancer site of Colorectal cancer.

Extension	male		female		Total	
	NO	%	NO	%	NO	%
Localized	6	11.32	7	17.07	13	13.83
Direct extension	7	13.21	7	17.07	14	14.89
Regional lymph nodes	12	22.64	9	21.95	21	22.34
Distant metastasis	20	37.74	10	24.39	30	31.91
Not applicable	1	1.89	0	0	1	1.06
Not know	7	13.21	8	19.51	15	15.96

Figures 11 Number by Age-group and sex of Colorectal cancer.

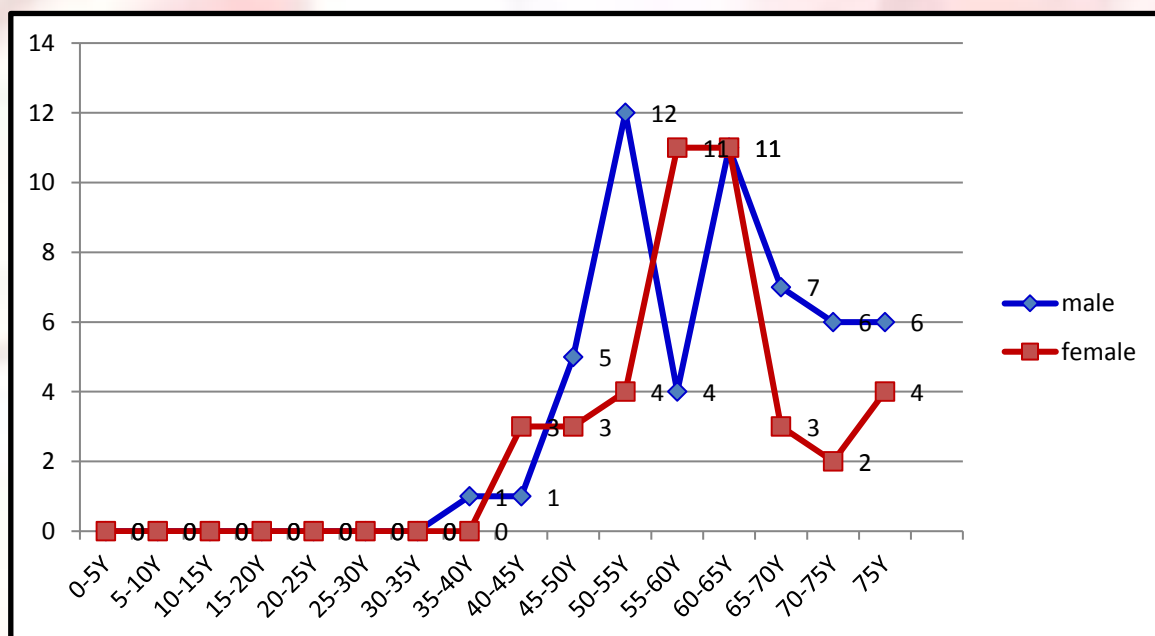


Table 26 Type of Stage of cancer site of Colorectal cancer.

Stage	male		female		Total	
	%	NO	%	NO	%	%
Stage 0	2	3.77	1	2.44	3	3.19
Stage 1	9	16.98	10	24.39	19	20.21
Stage 2	17	32.08	16	39.02	33	35.11
Stage 3	11	20.75	7	17.07	18	19.15
Stage 4	14	26.42	7	17.07	21	22.34
Not know	2	3.77	1	2.44	3	3.19

Table 27 Method of treatment of Colorectal cancer.

Method of treatment	male		female		Total	
	%	NO	%	NO	%	%
Not Record	5	9.43	5	12.2	10	10.64
Surgery	8	15.09	11	26.83	19	20.21
Chemotherapy	2	3.77	1	2.44	3	3.19
Sup	2	3.77	0	0	2	2.13
Palliative Care	1	1.89	0	0	1	1.06
Surgery + Chemotherapy	15	28.3	10	24.39	25	26.6
Surgery + Hormone	1	1.89	0	0	1	1.06
Surgery + Sup	2	3.77	1	2.44	3	3.19
Surgery + Palliative Care	1	1.89	3	7.32	4	4.26
Radiation + Chemotherapy	3	5.66	3	7.32	6	6.38
Chemotherapy + Palliative Care	1	1.89	0	0	1	1.06
Surgery + Radiation + Chemotherapy	5	9.43	4	9.76	9	9.57
Surgery + Radiation + Palliative Care	0	0	1	2.44	1	1.06
Surgery + Chemotherapy + Hormone	2	3.77	1	2.44	3	3.19

Method of treatment	male		female		Total	
	%	NO	%	NO	%	%
Surgery + Chemotherapy + Sup	1	1.89	0	0	1	1.06
Surgery + Chemotherapy + Palliative Care	2	3.77	1	2.44	3	3.19
Surgery + Sup + Palliative Care	2	3.77	0	0	2	2.13

5. Lymphoma

Table 28 Type of Diagnosis of cancer site of Lymphoma.

Diagnosis	male		female		Total	
	NO	%	NO	%	NO	%
History & Physical exam	12	3.04	25	4.97	37	4.12
Endoscopy & Radiohogy	155	39.24	94	18.69	249	27.73
Specific Biochem/Immuno test	1	0.25	0	0	1	0.11
Cytology & Hematology	0	0	9	1.79	9	1
History of matastasis	6	1.52	8	1.59	14	1.56
Histology of primary	1	0.25	13	2.58	14	1.56
Forensic autopsy & Biopsy	220	55.7	352	69.98	572	63.7

Tabel 29 Type of Extension of cancer site of Lymphoma.

Extension	male		female		Total	
	NO	%	NO	%	NO	%
In situ	0	0	5	0.99	5	0.56
Localized	23	5.82	120	23.86	143	15.92
Direct extension	19	4.81	38	7.55	57	6.35
Regional lymph nodes	25	6.33	63	12.52	88	9.8
Distant metastasis	128	32.41	124	24.65	252	28.06
Not applicable	44	11.14	39	7.75	83	9.24
Not know	156	39.49	114	22.66	270	30.07

Figures 12 Number by Age-group and sex of Lymphoma.

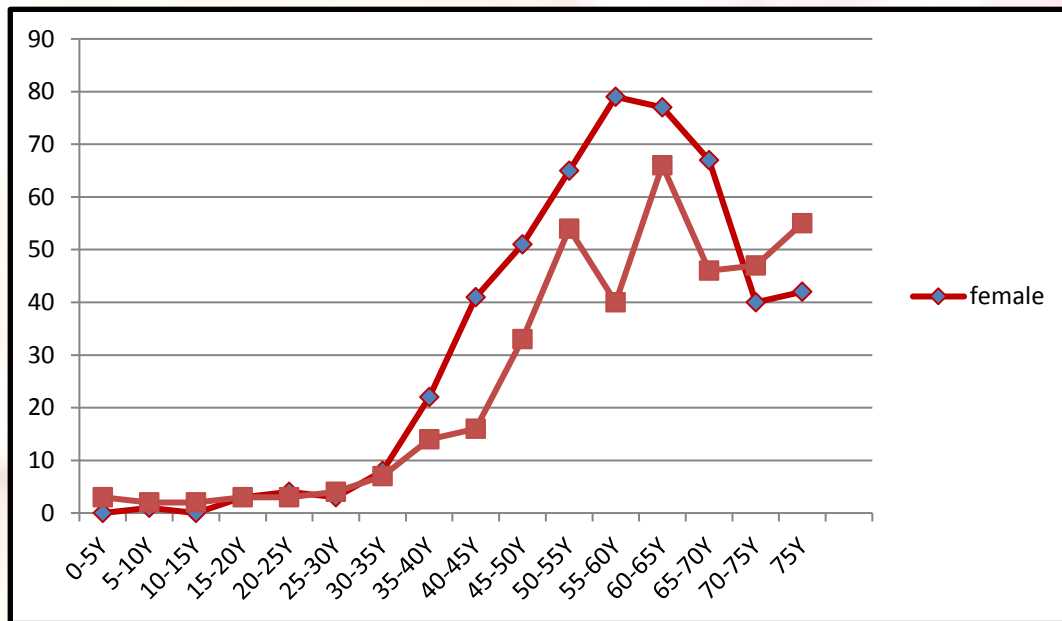


Table 30 Type of Stage of cancer site of Lymphoma.

Stage	male		female		Total	
	NO	%	NO	%	NO	%
Stage 1	1	0.25	0	0	1	0.11
Stage 2	13	3.29	67	13.32	80	8.91
Stage 3	23	5.82	75	14.91	98	10.91
Stage 4	47	11.9	92	18.29	139	15.48
Not konw	117	29.62	120	23.86	237	26.39

Table 31 Method of treatment of Lymphoma.

Method of treatment	male		female		Total	
	NO	%	NO	%	NO	%
Not Record	39	9.87	33	6.56	72	8.02
Surgery	29	7.34	53	10.54	82	9.13
Radiation	5	1.27	6	1.19	11	1.22
Chemotherapy	80	20.25	77	15.31	157	17.48
Hormone	0	0	2	0.4	2	0.22
Sup	60	15.19	50	9.94	110	12.25
Interventional	0	0	1	0.2	1	0.11



Method of treatment	male		female		Total	
	NO	%	NO	%	NO	%
Other	7	1.77	1	0.2	8	0.89
Palliative Care	56	14.18	34	6.76	90	10.02
Surgery + Radiation	5	1.27	5	0.99	10	1.11
Surgery + Chemotherapy	27	6.84	78	15.51	105	11.69
Surgery + Hormone	1	0.25	2	0.4	3	0.33
Surgery + Sup	8	2.03	4	0.8	12	1.34
Surgery + Palliative Care	1	0.25	13	2.58	14	1.56
Radiation + Chemotherapy	18	4.56	30	5.96	48	5.35
Radiation + Hormone	0	0	1	0.2	1	0.11
Radiation + Sup	1	0.25	0	0	1	0.11
Radiation + Palliative Care	1	0.25	2	0.4	3	0.33
Chemotherapy + Hormone	0	0	6	1.19	6	0.67
Chemotherapy + Sup	4	1.01	4	0.8	8	0.89
Chemotherapy + Other	0	0	2	0.4	2	0.22
Chemotherapy + Targetd Therapy	5	1.27	1	0.2	6	0.67
Chemotherapy + Palliative Care	4	1.01	9	1.79	13	1.45
Sup + Palliative Care	9	2.28	16	3.18	25	2.78
Surgery + Radiation + Chemotherapy	9	2.28	28	5.57	37	4.12
Surgery + Radiation + Palliative Care	3	0.76	1	0.2	4	0.45
Surgery + Chemotherapy + Hormone	3	0.76	13	2.58	16	1.78
Surgery + Chemotherapy + Sup	3	0.76	5	0.99	8	0.89
Surgery + Chemotherapy + Palliative Care	3	0.76	13	2.58	16	1.78
Surgery + Chemotherapy + Intraoperative Radiation	0	0	1	0.2	1	0.11

Method of treatment	male		female		Total	
	NO	%	NO	%	NO	%
Surgery + Hormone + Sup	0	0	1	0.2	1	0.11
Surgery + Hormone + Palliative Care	0	0	2	0.4	2	0.22
Surgery + Sup + Palliative Care	3	0.76	1	0.2	4	0.45
Radiation + Chemotherapy + Palliative Care	4	1.01	1	0.2	5	0.56
Chemotherapy + Sup + Palliative Care	2	0.51	1	0.2	3	0.33
Surgery + Radiation + Chemotherapy + Hormone	0	0	1	0.2	1	0.11
Surgery + Radiation + Chemotherapy + Sup	1	0.25	0	0	1	0.11
Surgery + Radiation + Hormone + Sup	1	0.25	0	0	1	0.11
Surgery + Chemotherapy + Hormone + Sup	2	0.51	2	0.4	4	0.45
Surgery + Chemotherapy + Hormone + Palliative Care	0	0	1	0.2	1	0.11
Surgery + Chemotherapy + Sup + Palliative Care	1	0.25	0	0	1	0.11
Surgery + Chemotherapy + Targetd Therapy + Palliative Care	0	0	1	0.2	1	0.11
Surgery + Chemotherapy + Hormone + Sup + Palliative Care	0	0	1	0.2	1	0.11



REFERENCES

Thai Cancer Base Report Online.Version 2 Beta 01 Release 20170706.

[ThaiCancerBase-ReportAllInOne_2562.09.25]





Annual Report 2017

**Sakonnakorn Hospital Comprehensive
Cancer Center.**

Tel: 042-176-000 ต่อ 3962

E-mail: sakonhccc@gmail.com